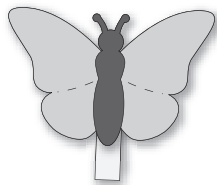
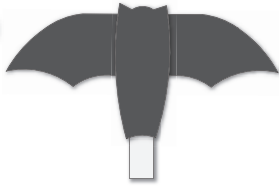


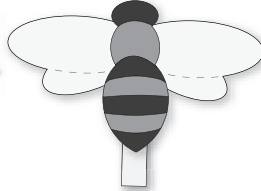
## Clothespin Critters



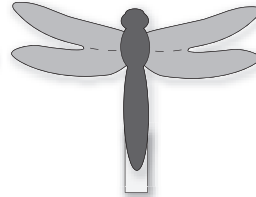
26746  
Butterfly



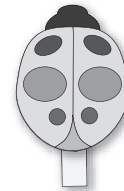
12198  
Bat



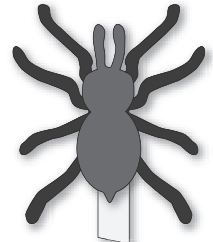
26744  
Bee



26748  
Dragonfly



26750  
Ladybug



26753  
Spider

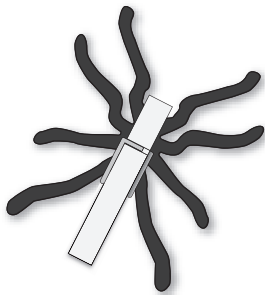


Figure A

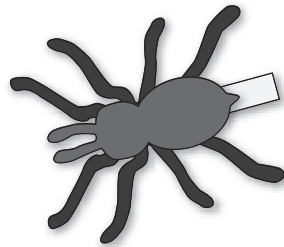


Figure B



Figure C

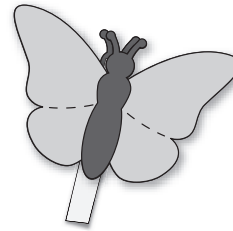


Figure D

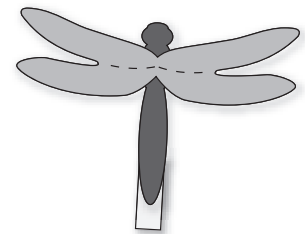


Figure E

### For Bat, Ladybug or Spider

1. Die-cut LG Clothespin Critter from cardstock or other paper.
2. Using glue or double-sided tape, attach the Bat Wings, the underside of the Ladybug or the Spider Legs to the bottom side of a clothespin (Figure A).
3. Adhere the corresponding body to the top side of the clothespin (Figure B).

### For Bee, Butterfly or Dragonfly

1. Die-cut LG Clothespin Critter from cardstock or other paper. Cut a second body for each insect.
2. Using glue or double-sided tape, attach one body to the bottom side of a clothespin (Figure C).
3. Adhere the Wings to the top side of the clothespin and attach the second body over the Wings (Figure D). If desired, the body could go on the clothespin first with the Wings on top (Figure E).

Note: As an alternative, the Bee, Butterfly and Dragonfly can be assembled with the wings on the bottom of the clothespin similar to the Bat.

- See Catalog or [ellisoneducation.com](http://ellisoneducation.com) for complete listing of Clothespin Critters.

### Clothespin Critter, Butterfly 26746-LG