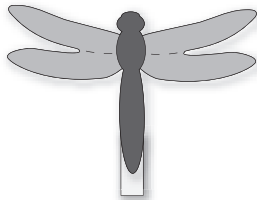
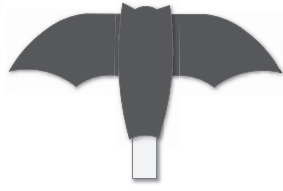


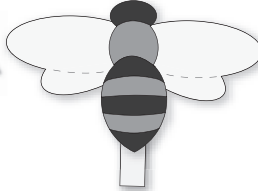
Clothespin Critters



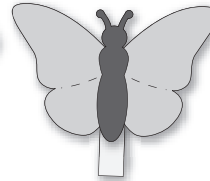
26748
Dragonfly



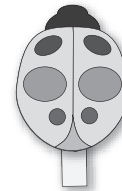
12198
Bat



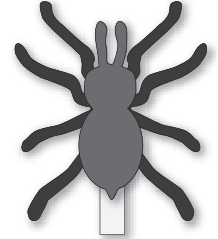
26744
Bee



26746
Butterfly



26750
Ladybug



26753
Spider

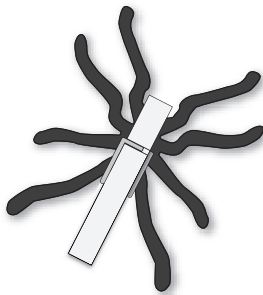


Figure A

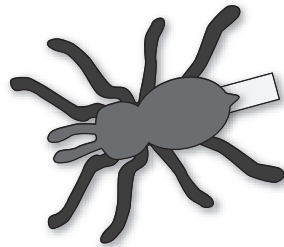


Figure B

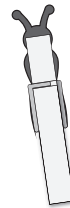


Figure C

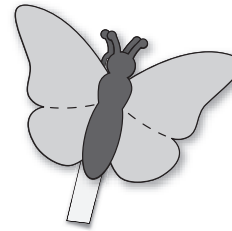


Figure D

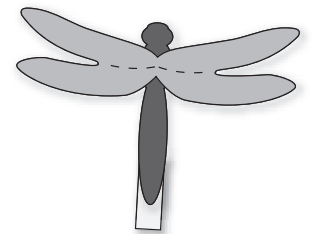


Figure E

For Bat, Ladybug or Spider

1. Die-cut LG Clothespin Critter from cardstock or other paper.
2. Using glue or double-sided tape, attach the Bat Wings, the underside of the Laybug or the Spider Legs to the bottom side of a clothespin (Figure A).
3. Adhere the corresponding body to the top side of the clothespin (Figure B).

For Bee, Butterfly or Dragonfly

1. Die-cut LG Clothespin Critter from cardstock or other paper. Cut a second body for each insect.
2. Using glue or double-sided tape, attach one body to the bottom side of a clothespin (Figure C).
3. Adhere the Wings to the top side of the clothespin and attach the second body over the Wings (Figure D). If desired, the body could go on the clothespin first with the Wings on top (Figure E).

Note: As an alternative, the Bee, Butterfly and Dragonfly can be assembled with the wings on the bottom of the clothespin similar to the Bat.

- See Catalog or ellisoneducation.com for complete listing of Clothespin Critters.

Clothespin Critter, Dragonfly 26748-LG