

## Mission, 3-D

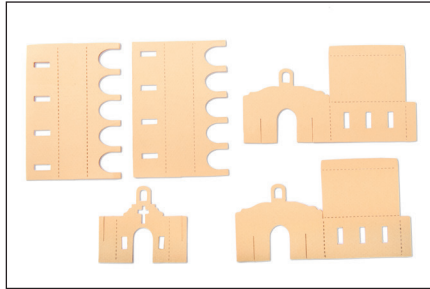


Figure A

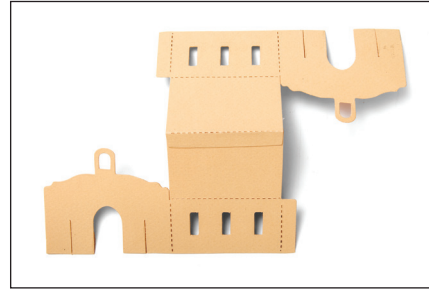


Figure B

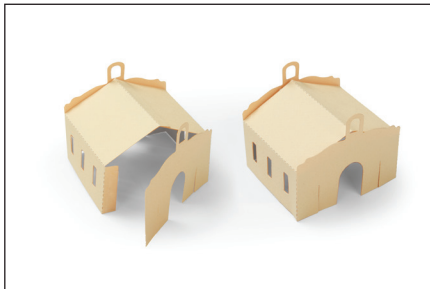


Figure C

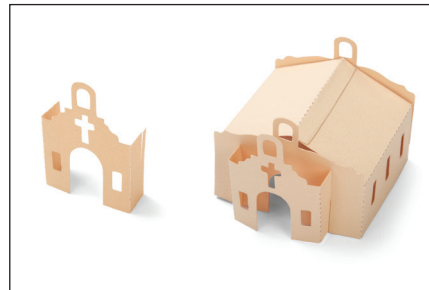


Figure D

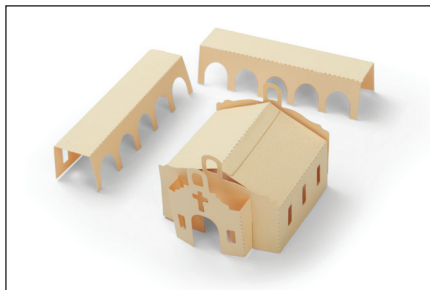


Figure E

**The teacher will die-cut the materials for student use prior to the lesson.**

1. Die-cut the Mission pieces from construction paper or cardstock. Cut as many corridors as needed to create the size patio desired (Figure A).
2. Cut two of the building pieces, and glue them together, overlapping at the roof line (Figure B).
3. Fold all perforations, and adhere tabs to front and back panels of the building (Figure C).
4. Fold the building front along the perforations, and slide the front onto the building at the two slits as shown (Figure D).
5. Fold the arched corridors to create a patio behind or next to the building (Figure E).

## Mission, 3-D 30800-DC